

FLORIDA DEPARTMENT OF EDUCATION

Project Application

Please return to: Florida Department of Education Bureau of Grants Management Room 344 Turlington Building 325 West Gaines Street Tallahassee, Florida 32399-0400 Telephone: (850) 245-0498 Suncom: 205-0498	A) Program Name: Florida Migrant Parent Advisory Council (FMPAC) Project 2006-2007	DOE USE ONLY Date Received
B) Name and Address of Eligible Applicant: Palm Beach 3340 Forest Hill Boulevard C-316 West Palm Beach, FL 33406		Project Number (DOE Assigned)
C) Total Funds Requested: \$50,000.00 <hr style="width: 20%; margin-left: 0;"/> DOE USE ONLY	D) Applicant Contact Information	
	Contact Name: Mary Jane Ford	Mailing Address: 702 W Ocean Boulevard Lantana, Florida 33462
	Telephone Number: 561-434-8533	SunCom Number: 262-8533
	Fax Number: 561-493-9674	E-mail Address: Ford@PalmBeach.K12.FL.US
CERTIFICATION <p>I, Arthur C. Johnson, (<i>Please Type Name</i>) do hereby certify that all facts, figures, and representations made in this application are true, correct, and consistent with the statement of general assurances and specific programmatic assurances for this project. Furthermore, all applicable statutes, regulations, and procedures; administrative and programmatic requirements; and procedures for fiscal control and maintenance of records will be implemented to ensure proper accountability for the expenditure of funds on this project. All records necessary to substantiate these requirements will be available for review by appropriate state and federal staff. I further certify that all expenditures will be obligated on or after the effective date and prior to the termination date of the project. Disbursements will be reported only as appropriate to this project, and will not be used for matching funds on this or any special project, where prohibited.</p> <p>Further, I understand that it is the responsibility of the agency head to obtain from its governing body the authorization for the submission of this application.</p>		
E) _____ <div style="text-align: center; margin-left: 100px;">Signature of Agency Head</div>		

TITLE I, PART C, MIGRANT EDUCATION

TAPS NUMBER

A) Palm Beach County School District -FMPAC
 Name of Eligible Recipient

B) _____
 Project Number (DOE Assigned)

FLORIDA DEPARTMENT OF EDUCATION BUDGET DESCRIPTION FORM

(1) FUNCTION	(2) OBJECT	(3) ACCOUNT DESCRIPTION	(4) AMOUNT
6150	100	Salaries	3,300
6150	200	Benefits	858
6150	330	Travel	23,142
6150	360	Rental -Meeting Space	7,000
6150	370	Postage	3,700
6150	510	Supplies	12,000
		(C) TOTAL	\$ 50,000



PERSONNEL SCHEDULE

Program Name FMPAC

Name of Eligible Recipient

Palm Beach County School District

(1) FUNCTION	(2) OBJECT	(3) POSITION TYPE	(4) FUNDED FTE
6150	118	Salaries (Part-time for translators)	.11

DOE 103A

PROFESSIONAL AND TECHNICAL SERVICES SCHEDULE

Program Name FMPAC

Name of Eligible Recipient Palm Beach County School District

On This Schedule Record Only Disbursements for the Purchase of Professional and Technical Services

(1) FUNCTION NUMBER	(2) OBJECT NUMBER	(3) DESCRIPTION OF SERVICES	
6150	360	Rental – Meeting Space	
6150	370	Postage	

DOE 103B

CAPITAL OUTLAY SCHEDULE

Program Name FMPAC

Name of Eligible Recipient

Palm Beach County School District

(1) FUNCTION	(2) OBJECT	(3) ITEM DESCRIPTION	
N/A	N/A	N/A	

DOE 103C

TRAVEL SCHEDULE

Program Name FMPAC

Name of Eligible Recipient Palm Beach County School District

On This Schedule Record Only Disbursements for the Purchase of Professional and Technical Services

(1) FUNCTION NUMBER	(2) OBJECT NUMBER	(3) DESCRIPTION OF SERVICES	
6150	330	In-County and Out-of-County Travel for Translators, Parents to attend conferences and meetings (in/out of state)	

DOE 103D

Describe how this program impacts student achievement, decrease drop out rates, and increase graduation rates.

- PBCSD will facilitate various targeted trainings to FMPAC parents that will focus on family literacy, awareness of academic trends of migrant students, the impact of school campus demographics on migrant students, peer pressure, developing strong study habits; as well as, facilitate hands-on training opportunities to FMPAC parents to develop leadership skills that will strengthen their ability to return to their communities and motivate other migrant parents to get involved in the academic success of their children. Statistics prove that children are more successful in school if their parents are intimately involved in their education.

PRODUCTS/TRAINING

The PBCSD will assist the FMPAC project to develop the following product and training activity by the following events:

- Documentation of a minimum of four trainings for migrant parents on topics determined by the FMPAC President (group consensus) and the Florida Department of Education (FDOE) project liaison;
- Revised copy of FMPAC BY-Laws

COORDINATED OR RELATED INITIATIVES/ACTIVITIES

The PBCSD will ensure that the FMPAC project will coordinate with the following entities:

- District migrant personnel
 - Migrant parents
 - Other agencies/associations that serve migrant families
 - Regional Comprehensive Centers that provide parent involvement training
-

GENERAL EDUCATION PROVISIONS ACT (GEPA) REQUIREMENT

Program Name FMPAC

Name of Eligible Applicant

Palm Beach County School District

The School District of Palm Beach County's Mission Statement, Fundamental Beliefs, and School Board Priorities reaffirm the desire for excellence in equity.

By being the first district in Florida to serve students solely through Title I School-wide programs, the district has by design, assumed equity for all students in the schools since the School Advisory Committee and School Improvement Plan deal with this issue at the school and community level.

All federally funded programs at the district level are approved by the local Board of Education as well as the State Department of Education. Furthermore, the state gives feedback as to whether the applications for programs are either approved, substantially approved, or subject to changes.

The Local Education Plan for the District of Palm Beach County is a consolidation of Title I Migrant services. This plan ensures equal access to all stakeholders regardless of gender, race, national, origin, disability or age.

The District Title I Migrant Education Program was audited by DOE for the school year 2004-2005. Findings were positive as to the equity and scope of the program and services.

Finally, being part of the District's Division of Curriculum and Learning Support, the Department of Multicultural Education, has access to and ensures total educational and programmatic inclusion with other departments within the Division, thus assuring equity and fairness of services while avoiding unnecessary duplication of efforts.

Backup documentation (Palm Beach County's Mission Statement, Fundamental Beliefs, Key Results, and School Board Priorities; and Palm Beach County's Local Educational Plan) is on file at the Department of Education.

**TITLE I, PART C, MIGRANT EDUCATION
2002-2003**

PROGRAM ASSURANCES

Name of Eligible Recipient: Palm Beach County School District

(6) to the extent feasible, such programs and projects will provide for—

(A) advocacy and outreach activities for migratory children and their families, including informing such children and families of, or helping such children and families gain access to, other education, health, nutrition, and social services;

(B) professional development programs, including mentoring, for teachers and other program personnel;

(C) family literacy programs, including such programs that use models developed under Even Start;

(D) the integration of information technology into educational and related programs; and

(E) programs to facilitate the transition of secondary school students to postsecondary education or employment; and

(7) the State will assist the Secretary in determining the number of migratory children under paragraphs (1)(A) and (2)(B)(i) of

(d) **PRIORITY FOR SERVICES-** In providing services with funds received under this part, each recipient of such funds shall give priority to migratory children who are failing, or most at risk of failing, to meet the State's challenging State academic content standards and challenging State student academic achievement standards, and whose education has been interrupted during the regular school year.

(e) **CONTINUATION OF SERVICES-** Notwithstanding any other provision of this part—

(1) a child who ceases to be a migratory child during a school term shall be eligible for services until the end of such term;

(2) a child who is no longer a migratory child may continue to receive services for 1 additional school year, but only if comparable services are not available through other programs; and

(3) secondary school students who were eligible for services in secondary school may continue to be served through credit accrual programs until graduation.

**TITLE I, PART C, MIGRANT EDUCATION
2005-2006**

PROGRAM ASSURANCES

Name of Eligible Recipient: Palm Beach County School District

The local operating agency receiving Title I, Part C migrant funds makes the following assurances:

(c) ASSURANCES- Each such application shall also include assurances, that—

(1) funds received under this part will be used only—

(A) for programs and projects, including the acquisition of equipment, in accordance with section 1306; and

(B) to coordinate such programs and projects with similar programs and projects within the State and in other States, as well as with other Federal programs that can benefit migratory children and their families;

(2) such programs and projects will be carried out in a manner consistent with the objectives of section 1114, subsections (b) and (d) of section 1115, subsections (b) and (c) of section 1120A, and part I;

(3) in the planning and operation of programs and projects at both the State and local agency operating level, there is consultation with parent advisory councils for programs of 1 school year in duration, and that all such programs and projects are carried out—

(A) in a manner that provides for the same parental involvement as is required for programs and projects under section 1118, unless extraordinary circumstances make such provision impractical; and

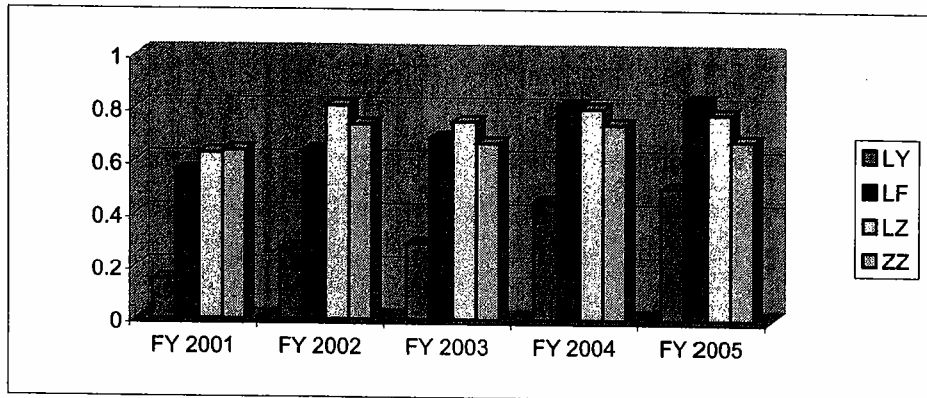
(B) in a format and language understandable to the parents;

(4) in planning and carrying out such programs and projects, there has been, and will be, adequate provision for addressing the unmet education needs of preschool migratory children;

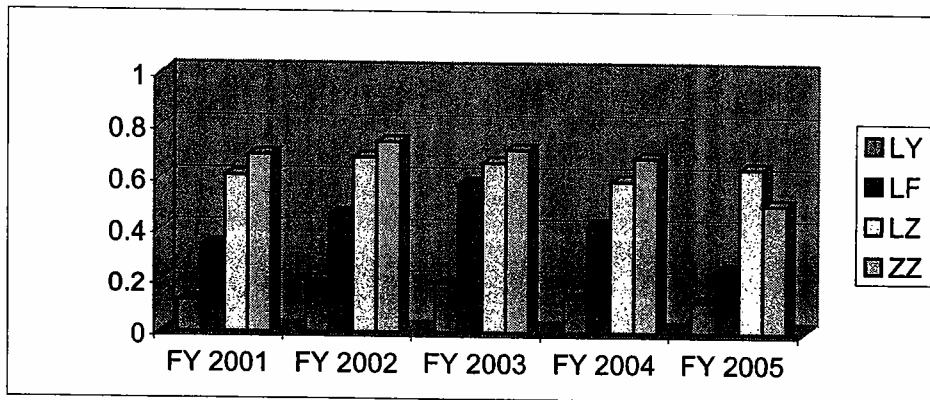
(5) the effectiveness of such programs and projects will be determined, where feasible, using the same approaches and standards that will be used to assess the performance of students, schools, and local educational agencies under part A.

TITLE I MIGRANT EDUCATION GRANT

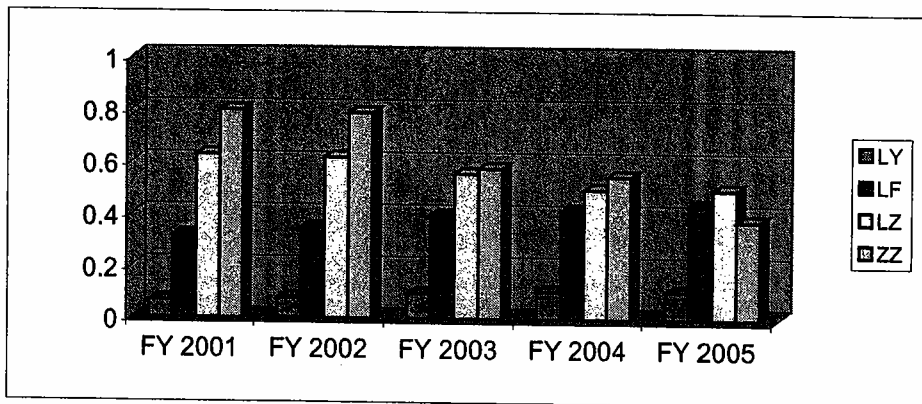
4th Grade FCAT Reading
Percent of Students Meeting or Exceeding Level 2 Standard



8th Grade FCAT Reading
Percent of Students Meeting or Exceeding Level 2 Standard



10th Grade FCAT Reading
Percent of Students Meeting or Exceeding Level 2 Standard



- Active Limited English Proficient Students
- Former Limited English Proficient Students in two year post reclassification monitoring
- Former Limited English Proficient Students
- Non-Limited English Proficient Students